

Welcome to Jesse's Track! We are so pleased you've come for a look around. Walking this track is the best introduction to Raakajlim. From the house, it's a 4km round trip, including the 2.7km Jesse's Track loop.

"Jesse learned to love the Mallee when holidaying there as a child and a young man. When his life was lost in a tragic sporting accident, his family determined to preserve his memory in the country he cared for." - John Burch

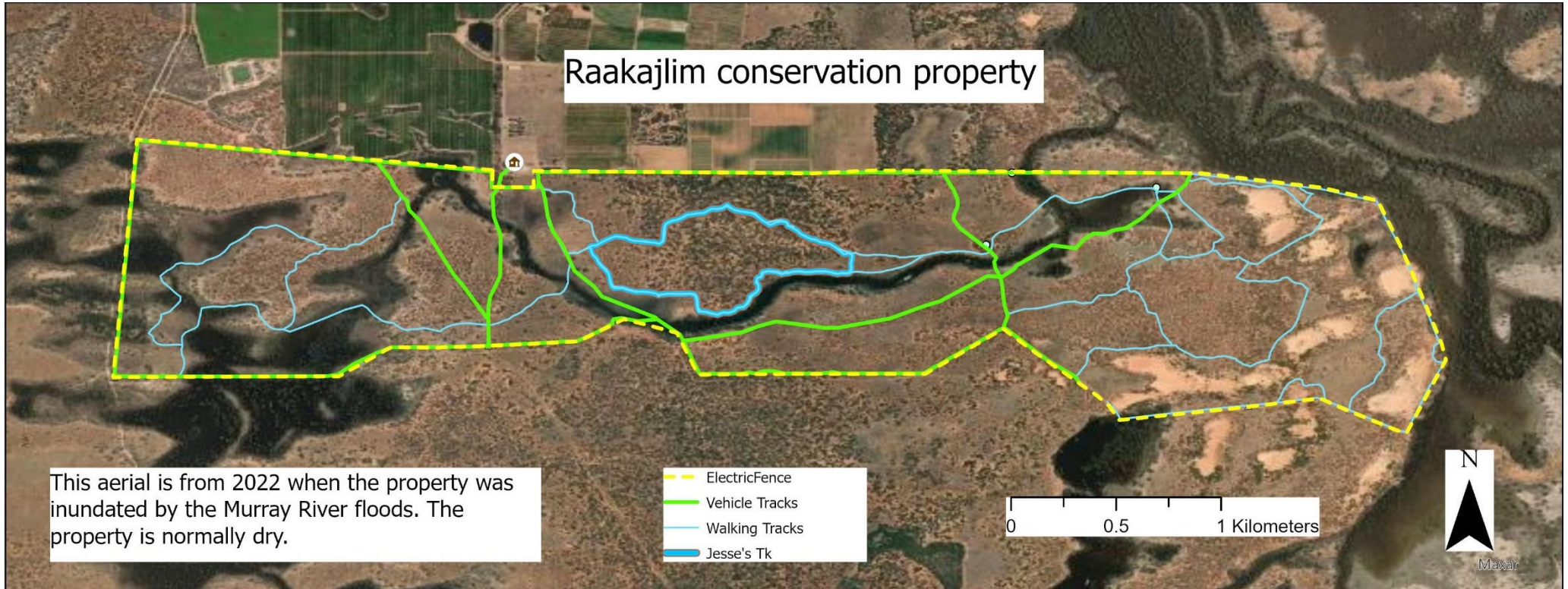
Jesse's Track includes seven beautiful signs donated by the Jesse Chaplin-Burch Trust. Each of these signs introduces you to the treasures found in the Victorian Mallee. We are also grateful that the generosity of the JCB Trust has contributed to the care and restoration of Raakajlim, in Jesse's memory.

Along your walk, you'll see examples of this restoration work: a 13km long electric fence to manage overgrazing (don't touch!), revegetation of the Semi-arid Pine woodlands, and plantings of rare plants. Look out for the birds and reptiles (including snakes!) thriving in this bushland. And keep an eye out for our hand-reared emus. They're tame and very curious! Please don't pat or feed them.



The track is suitable for most ages and fitness levels. It is well-defined, just follow the Regent Parrot, but is very sandy and has some short steeper sections. Please bring water, a hat and remember it gets hot in the Mallee!





Welcome to Raakajlim! We have been restoring the habitat on this 490-hectare conservation property since 2001.

Here you'll find most of the vegetation types in the Mallee of north-west Victoria: Mallee Woodlands, Semi-arid Woodlands, native Grasslands and floodplain Blackbox and Red Gum Woodlands. We also care for many threatened species. Look out for the famous Regent Parrots and Pink Cockatoos, and the lesser-known Arid Bronze Azure butterfly.

Raakajlim is surrounded by Hattah-Kulkyne National Park on three sides, with irrigated horticulture to the north. The Mighty Murray is just 1-km away. Large floods, like in 2022, flow into Raakajlim Creek running through the middle of the property.

Walking Jesse's Track is the best introduction to the property.

Please let us know if you would like to visit other parts of Raakajlim so we can arrange a longer tour of the property.

mallee conservation

Phil, Fiona & Emily Murdoch

"Raakajlim", Colignan, north-west Victoria

Call 0407 209 853 or 0475 291 744

  /malleeconservation

www.malleeconservation.com.au

malleeconservation@gmail.com